

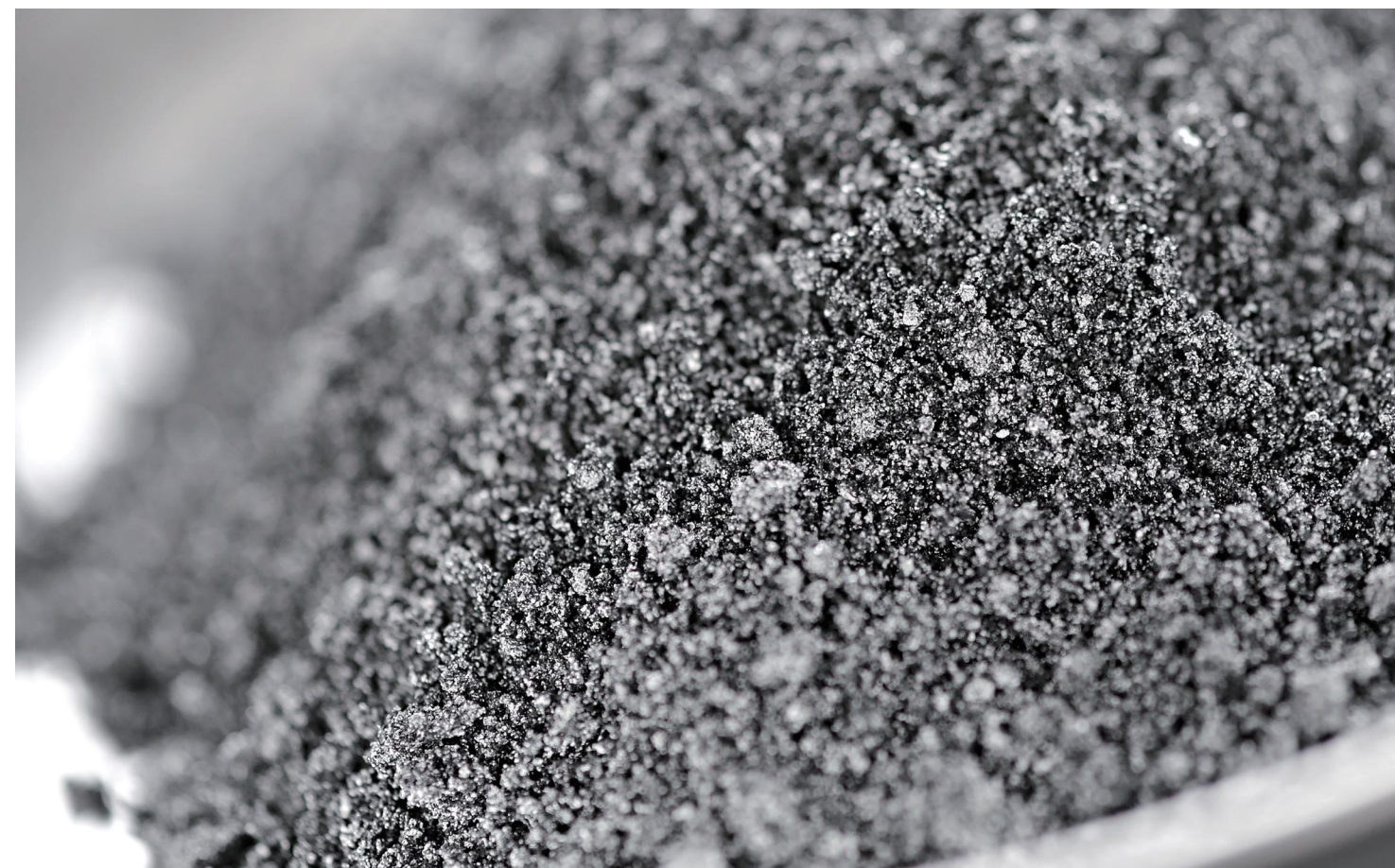
集团总部
安徽省合肥市双凤开发区金沪路18号
电话: 0551- 66399111
传真: 0551- 66399118

生产基地
合肥总部生产基地
铜陵生产基地
六安生产基地
山东生产基地
内蒙古生产基地

Sunrise Corporate Headquarters
Shuangfeng Development Zone, Hefei, Anhui, China
T: +86- 551- 66399111
F: +86- 551- 66399118

Production Base
Production base of headquarter in Hefei city
Production base in Tongling city
Production base in Lu'an city
Production base in Shandong province
Production base in Inner Mongolia

✉ xuyang@ahxuyang.cn
xuyang@xuyang.cc
🌐 www.ahxuyang.cn



水性铝银浆

WATERBORNE ALUMINIUM PIGMENT



如需了解产品详情请拨打
☎ 400 999 2508

Sunrise 旭阳®
aluminium pigments

公司简介

Company Profile

安徽旭阳集团, 创立于2002年, 是国内大型铝银浆、铝银粉、球型铝粉研发、生产和供应机构, 中国化工行业标准《涂料用铝颜料》的制修订单位, 已通过ISO9001:2015质量管理体系、ISO14001:2015环境管理体系及OHSAS18001:2007职业健康安全管理体系认证。

Sunrise was founded in 2002, which is a state-level high-tech enterprise in China with R&D, production and sales of aluminium pigments. Sunrise is the founder of China chemical industry standard "aluminium pigment for coatings", and the company has passed through ISO9001:2015 Quality Management System, ISO 4001:2015 Environment System certifications and OHSAS 18001-2007.

集团旗下有5大生产基地、1个行业工程技术研究中心、1个省级工程技术研究中心、1个功能性金属浆料研发及技术服务平台、2家进出口贸易公司和5个直属大区办事处, 综合实力在全国同行业中位居第一。

The company has 5 production bases, 1 industrial engineering research center, 1 provincial metal paste engineering research center, 2 import and export trading companies and 7 sales service department offices, so the overall strength ranks first in the aluminium pigments industry in China.



产品简介

Product's Introduction

水性铝颜料又称水性铝银浆,是随水性涂料的推广而发展起来的。金属铝是活泼的两性金属元素,易与水、酸、碱发生反应。因此,应用于水性树脂体系时,必须经过特殊的表面处理。产品通用于一般工业漆和汽车涂料,且不含重金属,能够管控壬基酚、多环芳烃、增塑剂、苯系物等。

Waterborne aluminium pigments, also known as waterborne aluminium paste, developed with the growth of Water-based coatings. As the metal aluminum is amphoteric active metal elements, which is easy to react with water, acid and alkali, it should take special surface treatment when add in aqueous resin system. Waterborne aluminium pigment mainly used in general industrial coatings and automotive coatings, do not contains heavy metals, and we can control the content of nonyl-phenol, polycyclic aromatic hydrocarbon, plasticizer, benzenes. For more information please contact us.

产品类型与型号

Types and Grades

WA系列水性铝银浆

WA series hydrophilic aluminium pigment

该系列铝颜料为表面经过特殊钝化处理,它能够和水性树脂体系具有良好的相容性,同时具有优异的金属效果,产品广泛应用于烤漆、印花、涂布等。

This series aluminium pigment was treated by special passivation on the surface. It has good compatibility with waterborne resin system and excellent metal effect. Mainly used for paints, inks and coatings.

型号 Grade	中位径 D50-Value (μm)	固体含量 Non-Volatile Content%(± 2)	表面处理 Surface Treatment	溶剂 Solvent
WA8005	13	65	聚合物	BG/IPA
WA8009	16	65	聚合物	BG/IPA
WA701	16	65	聚合物	BG/IPA
WA702	20	65	聚合物	BG/IPA
WA8008A	18	65	聚合物	BG/IPA
WA8221	28	68	聚合物	BG/IPA
WA8238	38	68	聚合物	BG/IPA
WA8255	52	68	聚合物	BG/IPA
WA8270	60	68	聚合物	BG/IPA

BG=乙二醇丁醚/Butyl glycol IPA=异丙醇/Isopropyl alcohol

WH系列水性铝银浆

WH series waterborne aluminium pigment

该系列铝颜料为表面经过二氧化硅特殊处理水性铝颜料,包膜厚度均匀、密实,不影响铝片的金属光泽,在长时间的储存过程中,水或酸、碱性物质不易渗透包覆层,不产生“涨听”现象,分散性、白亮度好,广泛应用于水性烤漆、水性塑胶漆、水性油墨、水性建筑涂料等。

Of this series, aluminium flake are double coated with SiO₂ and high polymer material. The coating thickness is uniform and dense, which will not affect the metallic luster of aluminium flake. During its long-term storage, water, acid or alkali material is hard to permeate the coating layer, so the product has great dispersity, whiteness and brightness, having no tendency to react chemically or produce gas. Widely used in waterborne baking varnish, waterborne plastic coatings, waterborne printing inks, waterborne construction coatings, etc.

型号 Grade	中位径 D50-Value (µm)	固体含量 Non-Volatile Content%(±2)	表面处理 Surface Treatment	溶剂 Solvent
WH008	8	50	SiO ₂	IPA
WH8000	11	55	SiO ₂	IPA
WH8005	13	60	SiO ₂	IPA
WH701	16	60	SiO ₂	IPA
WH8009	16	60	SiO ₂	IPA
WH702	20	60	SiO ₂	IPA
WH8008A	18	60	SiO ₂	IPA
WH8221	28	65	SiO ₂	IPA
WH8238	38	65	SiO ₂	IPA
WH8255	52	65	SiO ₂	IPA
WH8270	60	65	SiO ₂	IPA

IPA=异丙醇/Isopropyl alcohol

水性铝银浆行业应用指南

Applications Guide of waterborne aluminium pigment paste

产品类型 Products	行业 Applications							
	塑胶漆 Plastic Paint	金属漆 Metal Paint	建筑漆 Construction Paint	木漆 Wooden Paint	玻璃漆 Glass Paint	印刷 凹印、胶印 Gravure, Offset screen	印刷 丝印 Screen printing	
WH	008	■	■	■	■	★	■	
	8005	★	■	■	■	▲	★	
	8008A	★	★	■	▲	■	■	
	8214	★	★	★	■	▲	■	
	8230	■	★	■	★	■	■	
	8255	■	■	★	★	■	■	
	701	■	▲	★	▲	■	■	
	020	■	■	■	▲	■	★	
WA	702	■	■	★	▲	■	■	
	8214	■	■	■	■	★	■	
	8255	■	■	▲	★	■	■	
	8005	■	■	■	■	■	★	
	8008A	■	■	■	■	★	■	
	8008A	■	■	■	■	★	▲	

备注

COMMENTS

★ 强烈推荐 High recommended ▲ 推荐 Recommended ■ 一般 Normal

更多型号可按需定制 More customized grades are available.

应用须知

1 存储稳定性检测 (建议在使用铝银浆之前做该项检测。)

1份铝银浆 + 9份水性基料 (PH=5-9) 制备成漆200g, 存于密闭容器内40°C存储30天或50°C存储7天, 存储后观察整体性能变化, 以及放气量不超过10ml。

2 建议铝银浆添加方法

第一步: 建议以1:1.5或1:2的比例把铝浆预先分散在助溶剂 (醚、醇或去离子水中的一种或几种) 中, 在预分散时添加湿润分散剂效果更佳;

第二步: 将水性树脂和其它助剂按照配方的比例加入分散缸, 搅拌均匀;

第三步: 在搅拌状态下将铝浆分散液加到分散好的水性树脂体系中, 低速搅拌 (建议桨叶式分散, 转速控制在300-500rpm) 均匀, 确保其完全分散, 使颜料尽量得到更为理想的效果。

3 水性铝银浆存储须知

WA系列铝银浆未开封储存期为3个月, 开封后易与空气接触, 防止品质下降, 请尽快使用完, 制漆后建议存储不超过15天;

WH系列铝银浆未开封时储存期为12个月, 如超过保质期建议使用前做小试, 制漆后建议存储不超过3个月。

4 存储条件

请避免光线直射, 温度不超过25°C, 湿度不超过60, 取料后及时封口。

5 申明

以上检测方法和存储期限为我司根据市场客户反馈以及内部实验得到的参考数据, 仅供客户参考。

由于体系、配方、使用环境等不同, 广大客户在使用前需认真检测, 防止带来不必要的经济损失。

Application Guide

1 Storage stability detection (it is recommended to do this test before using aluminum silver paste)

1. Make 200g paint with 20g Aluminium Paste and 180g water-based binders (PH=5-9).

2. Then store the paint in a sealed container @40 °C for 30days, or @50°C for 7 days.

3. Observe if there's any change of the performance, and the amount of gassing should be less than 10ml.

2 Suggestions for adding aluminium silver paste

1. The first step: We recommend to pre disperse aluminium paste and cosolvents (ether, alcohol or deionized water) in the proportion of 1:1.5 or 1:2, and adding wetting dispersant which will have better effect in the pre dispersion process;

2. The second step: Put the water resin and other additives into the dispersed cylinder and stirring evenly in accordance with the proportion of the formula;

3. The third step: In the state of stirring, add the aluminum paste dispersing liquid into the waterborne resin, stirring at low-speed (recommended paddle dispersed, the speed should be controlled in the 300-500rpm) to ensure the uniform, fully dispersed, the pigment will achieved more satisfactory results.

3 Instructions for storage of waterborne aluminum silver paste

The unopened WA series aluminum paste can be stored for 3 months. After opening, it's easily to contact with air. To prevent the decline in quality, please use it up as soon as possible, after 15 days when the paint is made;

The unopened WH series aluminum paste can be stored for 12 months. If the expiration date is exceeded, please make the trial before using it. Recommend storage period is not more than 3 months after the paint is made;

4 Storage conditions

Please avoid direct light, the temperature should be no higher than 25 degrees, the humidity is no more than 60, timely sealing after picking

5 Statement

The above detection methods and storage period were obtained according to the customer's feedback and internal experiments, it's for customer reference only. Due to the use of system, formula, and environment, the customer needs to be carefully tested before use, to prevent unnecessary economic losses.